

# **SAFE & TOGETHER LONDON PILOT IMPACT EVALUATION**

## **Part 1 – Call specifications**

May 2026



Dear applicant,

Thank you for your interest in the Safe & Together pilot impact evaluation.

Foundations and MOPAC are pleased to invite London local authorities to apply to participate in a pilot randomised controlled trial (RCT) of the Safe & Together Model within Children's Social Care and Family Help services.

Safe & Together is a systems-change model designed to strengthen responses to domestic abuse by supporting practitioners and organisations to:

- Keeping children safe and together with the non-abusive parent wherever possible.
- Partnering with the non-abusive parent as a default safeguarding approach.
- Intervening with perpetrators to reduce harm to children.

The model combines workforce development with wider implementation support to strengthen perpetrator-focused, domestic abuse-informed practice across services.

This pilot evaluation will explore whether Safe & Together can be effectively implemented and evaluated within local authority settings, and will contribute to the national evidence base on what works in domestic abuse workforce development and systems change.

Prior to full applications launching, we conducted an Expression of Interest (EOI) round to gauge initial interest and questions from local authorities. We invite all interested local authorities, regardless of whether or not a formal EOI was submitted, to submit a full application to outline your interest in the Safe & Together pilot impact evaluation.

The purpose of this application is to determine whether your borough/local authority is eligible for Safe & Together in the context of this evaluation and to understand some information about your borough that will support a smooth set-up phase, should you be invited to participate.

### **What will constitute a successful evaluation**

For the purposes of this opportunity, a successful evaluation is one that is:

- **Useful:** its findings are actively used by Department for Education, MOPAC or other funders to inform future policy documents, business cases and guidance for local authorities
- **Credible:** it meets high standards of ethical, analytical and methodological rigour, as set out in this Call Specification
- **Timely:** it generates evidence within the timescales required to inform decisions ahead of national rollout and statutory implementation
- **Efficient:** it makes proportionate and well-judged use of the available resources, balancing ambition with feasibility.



### **About this opportunity**

This is an opportunity to take part in an internationally recognised programme of work and contribute to learning and growing the evidence base for what works in domestic abuse workforce development.

We recognise the complexity of evaluating a programme delivered in diverse local contexts and under real-world constraints. We are therefore seeking proposals from teams with a high commitment and buy-in to evaluation, and a genuine interest in the use of the evidence created.

Within this document you will find guidance on the application process, details of the scope of the evaluation, and information on how successful applicants will work with partners if successful.

**Once you have completed your Application Form, please upload them via our [Application Portal](#) by 12PM (midday) Monday 8 June 2026.**

If you have any questions or require support with your application, please do not hesitate to contact the project team at [evaluation@foundations.org.uk](mailto:evaluation@foundations.org.uk).

We look forward to reviewing your application.

Kind regards,

Foundations and MOPAC



# CONTENTS

Background and context for evaluation .....	5
Section 1: Scope of the opportunity for the evaluation of Safe & Together.....	5
1.1. Background and context .....	5
1.2. Introduction to Safe & Together.....	5
1.3. Proposed evaluation design.....	6
1.4. Impact and outcomes .....	8
Section 2: Requirements to participate in the evaluation .....	9
2.1. Eligibility criteria .....	9
2.2. Participation in the evaluation.....	10
2.3. Timeline .....	12
2.4. Key activities by phase .....	12
How to apply .....	14
Step 1: Webinar .....	14
Step 2: Writing your application .....	14
Step 3: Shortlisting and decision .....	14
Appendices .....	16
Appendix 1: Safe & Together theory of change .....	16
Appendix 2: Safe & Together Model outcomes .....	17
CSC practitioners.....	17
CSC managers.....	17
CSC teams .....	17
Non-abusive parents and children.....	17
Perpetrators .....	18
Appendix 3: Data protection.....	18



# Background and context for evaluation

## Section 1: Scope of the opportunity for the evaluation of Safe & Together

### 1.1. Background and context

The **Mayor's Office for Policing and Crime (MOPAC)**, in partnership with **Foundations**, is funding the next phase of the Safe and Together partnership model across London between 2026–2028. The Safe & Together London partnership model is led by the borough of **Waltham Forest** and delivery and implementation support is led by **Respect**, the UK charity stopping perpetrators of domestic abuse. This phase builds on previous implementation and evaluation activity and reflects a shared commitment to strengthening whole-system responses to domestic abuse where children are involved.

The partnership model aligns with emerging national and London policy priorities relating to violence against women and girls, including the importance of recognising children as victims in their own right, strengthening perpetrator accountability, supporting earlier intervention, and embedding coordinated community responses across safeguarding systems.

By delivering a pilot impact evaluation of the model, we aim to generate evidence to support sustainable systems change within local authority practice and wider partnership responses to domestic abuse, while contributing to the evidence base around implementation, workforce development and organisational change. Alongside model delivery, the pilot impact evaluation will support learning around how Safe & Together can be effectively embedded within local systems over the longer term.

The pilot impact evaluation will be independently conducted by **Cordis Bright** and funded by **Foundations**. As the evaluator, Cordis Bright is responsible for leading all evaluation activities, such as designing research tools, data collection, analysis, and reporting. Cordis Bright will work closely with the Evaluation Lead in selected boroughs to ensure evaluation processes are as clear and low-burden as possible.

### 1.2. Introduction to Safe & Together

#### *Original Safe & Together Model*

The Safe & Together Model is an internationally established framework for transforming how the workforce to better respond to families affected by domestic abuse, developed by David Mandel and the Safe & Together Institute. The model applies a child-centred, strengths-based, and systems-informed approach by to achieve three core aims:

- Keeping children safe and together with the non-abusive parent wherever possible.
- Partnering with the non-abusive parent as a default safeguarding approach.
- Intervening with perpetrators to reduce harm to children.



These aims are operationalised through a structured set of workforce development activities, including a four day CORE training for practitioners, alongside training for supervisors and Overview training for multi-agency professionals. These training components are developed and owned by the Safe & Together Institute and are delivered as manualised, standardised programmes.

### ***Respect's Safe & Together Implementation Model***

The Safe & Together Implementation Model has been delivered by Respect as part of the Safe & Together London Partnership since 2019. In addition to delivering workforce development activities, Respect developed the full Safe & Together implementation model (“full implementation model” hereafter), which combines CORE training with structured implementation support delivered by dedicated Implementation Leads. This includes activities such as case consultation, supervision support, quality assurance processes, and organisational embedding work designed to translate training into sustained changes in routine practice.

Existing evaluations including a [multi-year UK-based evaluation](#) by The Child and Woman Abuse Studies Unit at London Metropolitan University and Foundations’ [feasibility study of Restart](#) (of which the full implementation model is a core component) suggest the model is acceptable to practitioners and may support improvements in workforce knowledge, confidence, and practice. However, there is currently limited UK experimental evidence examining implementation through a randomised design.

Therefore, this pilot impact evaluation will build on the existing evidence to assess whether the Safe & Together Model can be robustly evaluated using a randomised controlled trial design.

A central feature of the study is the distinction between:

- **CORE training alone**, which aims to improve CSC practitioner knowledge and confidence in responding to domestic abuse, and
- **The full implementation model**, designed and delivered by Respect, which combines CORE and Supervisor training with structured implementation support to enable sustained changes in practice and organisational processes.

The trial is designed to test whether implementation support leads to greater and more sustained changes than training alone.

### **1.3. Proposed evaluation design**

The evaluation will take place across seven London local authorities during 2026–2028.

The study includes three linked components:

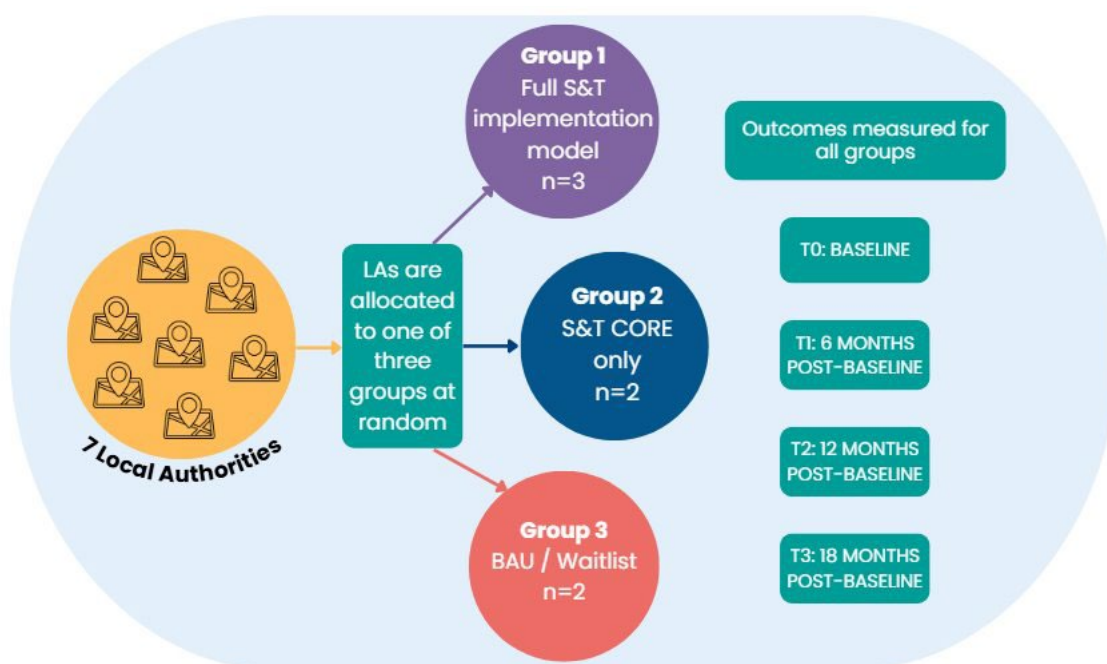
- A pilot randomised controlled trial (RCT)
- An implementation and process evaluation (IPE)
- A feasibility cost analysis.



### *Pilot randomised controlled trial (RCT)*

The proposed evaluation design includes a three-armed pilot randomised controlled trial (RCT) conducted over 2026/2027 and 2027/2028 in **seven London local authorities** ('sites'). Each site will be randomly allocated to one of three groups:

- **Group 1 (3 sites):** receive S&T with **full implementation** support offer
- **Group 2 (2 sites):** receive S&T **CORE training only** (no implementation support)
- **Group 3 (2 sites):** continue business-as-usual (**BAU**) in **Year 1** to act as a control group and then receive CORE training in Year 2 (for free).



Outcomes will be measured for all groups at 4 time points to help us understand whether Safe & Together can be effectively implemented and evaluated within local authority settings, and to inform the design of a future larger-scale evaluation.

The pilot trial will explore:

- Whether local authorities and practitioners can be successfully recruited and retained within the study;
- Whether proposed outcome measures and data collection approaches are feasible and acceptable;
- How practitioners, managers, and leaders experience the model and evaluation process;
- Whether meaningful differences emerge between trial groups; and
- Whether the study design is suitable for a future efficacy trial.

The evaluation focuses primarily on workforce, organisational, and practice-related outcomes, rather than directly measuring family-level outcomes.



### ***Implementation and process evaluation (IPE)***

A mixed-methods implementation and process evaluation (IPE) will run alongside the pilot RCT.

The IPE will focus on whether the model can be delivered as intended across diverse Children's Social Care (CSC) contexts, how practitioners and stakeholders experience it, whether the proposed trial procedures are feasible and acceptable in practice, and what appears to be most important in supporting successful implementation.

The IPE is particularly important in this study because Safe & Together is intended to operate not only as a training intervention, but as a broader **systems change model**. Alongside the pilot trial outcomes, the IPE will therefore examine how implementation unfolds in practice, including variation in reach, fidelity, adaptation, contamination, and the contextual factors that support or hinder embedding the model in practice.

The IPE has five aims:

1. How implementation operates across different local authority contexts
2. How practitioners, managers, and stakeholders experience the model
3. Factors that support or hinder implementation
4. How the model is embedded within organisational processes and practice
5. How feasible and acceptable the evaluation processes are in practice.

The IPE is essential for interpreting outcome findings and informing the design of a future efficacy study.

### ***Feasibility cost analysis***

A **feasibility cost evaluation** will be conducted alongside the pilot RCT. The purpose of the cost evaluation is not to provide a full cost-effectiveness assessment, but to test the feasibility of identifying, collecting and analysing the key cost components that would be required for a future economic evaluation of Safe & Together implementation.

## **1.4. Impact and outcomes**

During the set-up phase, Foundations, MOPAC, Respect, Waltham Forest and Cordis Bright will work collaboratively with participating local authorities to finalise the outcome measures and data collection approach for the pilot evaluation.

The evaluation is expected to draw on a combination of:

- Workforce survey data
- Implementation and monitoring information, collected by Respect
- Where feasible and appropriate, routine or existing local authority data sources.

Cordis Bright will work closely with participating local authorities during the mobilisation phase to ensure that proposed data collection approaches are proportionate, feasible, and acceptable within practice settings.



The themes of interest for primary and secondary outcomes align with model's Theory of Change (see Appendix 1) and are as follows:

**Primary outcome:**

Practitioner knowledge, attitudes and confidence relating to domestic abuse (measured through the Domestic Abuse and Safeguarding Children Scale).

**Secondary outcomes:**

- Practitioner capability engaging perpetrators
- Team culture supporting perpetrator focused practice
- Use of Safe & Together aligned domestic abuse practice behaviours
- Organisational practices supporting Safe & Together implementation
- Evidence of Safe & Together aligned practice in casework

The full list of intended short, medium and longer-term outcomes are included in Appendix 2.

## Section 2: Requirements to participate in the evaluation

### 2.1. Eligibility criteria

This opportunity is open to proposals from boroughs which meet the following essential criteria:

- a) Deliver Children's Social Care (CSC) services within London;
- b) Not currently be implementing the Safe & Together Model;**
- c) Be willing to participate in a **cluster randomised pilot trial**, including random allocation to study arms;
- d) Be willing to commit the **£16,000 per year over two years of match funding** required to participate;<sup>1</sup>
- e) Agree to participate in study data collection activities, including practitioner surveys and case file audit sampling where appropriate;
- f) Nominate a **local evaluation point of contact** to support implementation and evaluation activities; and
- g) Support practitioner participation in Safe & Together training and implementation activities where applicable. See [Participation in the Evaluation](#) and [Key activities by phase](#) for more detail.

---

<sup>1</sup> Please note that two local authorities will be randomly allocated to be a waitlist control group. These two local authorities will not be required to pay anything to participate in the trial. They will receive no training in Year 2026/27, but will receive Safe & Together CORE training in 2027/28 free of charge. See Participation in the Evaluation for more detail.



In addition to these criteria, Foundations and MOPAC will also consider how applicants demonstrate the following, especially in the event we have more than seven local authorities interested and eligible:

- **Commitment to evaluation:** Applicants should be willing to engage in a rigorous evaluation process that contributes to existing knowledge and evidence on domestic abuse workforce training approaches.
- **Stakeholder engagement and safeguarding:** Local authorities should actively engage stakeholders throughout delivery and be able to demonstrate sufficient senior sponsor support. Local authorities also must demonstrate the appropriate safeguarding measures they have in place.
- **Implementation and engagement:** Applicants must ensure there are no major barriers to recruitment and retention or have appropriate mitigation plans in place to support staff engagement with training, implementation support activities and evaluation activities.
- **Borough team and capacity:** The borough project team should have the necessary expertise, experience, and resources to support the required activities.

## 2.2. Participation in the evaluation

Successful boroughs will work collaboratively with Respect, Waltham Forest, Foundations, MOPAC, and Cordis Bright throughout the set-up, delivery, and evaluation phases of the project.

If you are successfully selected for delivery and evaluation of Safe & Together, it is important that you understand how this type of evaluation may impact delivery and implementation of the Safe & Together Model.

The following points outline key considerations you should be aware of:

### *Randomisation*

- Randomisation will take place at the borough level.
- This means there is a chance that a borough may sign up to the trial and be placed in group 3, receiving no S&T training in the first year. These two boroughs will be the control group.
- The control group will continue receiving any usual support they would typically access, and in year 2 access the S&T CORE training at no financial cost. The evaluation will compare their outcomes with those of other groups.

### *Workforce engagement*

- Participating local authorities will be expected to:
  - Support practitioner engagement with training and implementation activities where applicable
  - Support workforce participation in surveys and other evaluation activities
  - Identify appropriate local leads and points of contact
  - Work collaboratively with partners to support implementation planning and communication.



### *Delivery and implementation*

- Participating boroughs will work with Respect and Cordis Bright during the mobilisation phase to support implementation planning and ensure the model can be delivered consistently across participating sites.
- While implementation support will be responsive to local context, participating sites will be expected to maintain the core components of the agreed delivery model throughout the pilot period.

### *Data collection and evaluation activities*

- Local authorities will support evaluation activities including:
  - Workforce surveys
  - Implementation and monitoring information
  - Qualitative interviews or focus groups where appropriate
  - Case file audit activity where agreed.
- Cordis Bright will work with participating local authorities to ensure data collection approaches are proportionate and manageable within operational settings.

### *Ethical and practical considerations*

- You will need to work with partners to ensure appropriate data protection measures are in place, such as Data Sharing Agreements (DSAs) and Data Privacy Notices (DPNs), in compliance with relevant regulations.
- Informed consent processes will be required, ensuring participants understand their involvement in the evaluation and how their data will be used.
- Staff may need guidance on handling participant concerns, particularly if individuals are disappointed about their borough being randomised into the waitlist condition. Boroughs will be supported to navigate these concerns and/or conversations.

### *Learning and improvement*

- Alongside the pilot RCT, an Implementation and Process Evaluation (IPE) will be conducted. This will help understand how the programme is delivered, any challenges faced, and what improvements can be made.
- The evaluation team may carry out interviews with staff receiving the training, and key stakeholders to gain insights into what is working well and where adjustments may be needed.

### *Funding contributions and financial commitment*

- MOPAC is contributing significant investment to this phase as part of its wider commitment to improving responses to domestic abuse and driving long-term change across London's safeguarding landscape. Foundations is contributing significant investment to fund the independent evaluation of Safe & Together, in alignment with our [REACH Plan](#) commitment to evaluate approaches to equip the children's and families' workforce to spot and respond to domestic abuse more effectively.
- Successful local authorities will be required to contribute the reduced cost of **£16,000 per year over two years of match funding** required to participate.



- However, the two local authorities randomly allocated to be a waitlist control group (group 3) will not be required to pay anything to participate in the trial. This is because they will receive no training in Year 2026/27 instead continuing with BAU, and will receive Safe & Together CORE training in 2027/28 free of charge.

### 2.3. Timeline

Funding for Safe & Together delivery is available until March 2028. The proposed start date to begin delivery is September/October 2026. However, local authorities selected to participate in the evaluation will be required to support partners with set-up activities prior to delivery starting.

Please note these dates are provisional and may be updated. We will keep you informed of any changes with prior notice.

Date	Activity
w/c 18 May 2026	Full applications open
8 June 2026	<b>Application deadline</b>
8–12 June 2026	Shortlisting period
w/c 15 June	Successful local authorities notified
22 June–30 September 2026	Set-up and mobilisation
October 2026–March 2028	Delivery phase

### 2.4. Key activities by phase

#### *Set-up and mobilisation phase (up to 3 months)*

The set-up and mobilisation phase is a crucial period before delivery begins, ensuring all necessary foundations are in place. During this time, delivery partners, evaluators, and funders will work together with selected local authorities to finalise key elements, including Grant Agreements, data protection, evaluation design, and ethical approvals.

Boroughs will work with Respect and Waltham Forest on **delivery mobilisation activities**. These activities completed will include:

- Establishing relationships with delivery partners
- Familiarising with the model
- Identifying practitioners for training, with the first session likely to take place in October
- Providing access to necessary data systems



- Participating local authorities will also be expected to support a small number of **evaluation mobilisation activities**, including:
  - Attending online workshops or briefing sessions
  - Supporting implementation planning and scheduling
  - Engaging with evaluation guidance materials
  - Participating in set-up meetings relating to monitoring and data collection processes.

This phase is intended to support a smooth transition into delivery and ensure that implementation and evaluation activities are proportionate, coordinated, and achievable within local authority contexts.

### ***Delivery phase (18 months)***

This is the phase during which the Safe & Together Model and CORE training will be actively implemented and evaluated. This phase focuses on ensuring high-quality, consistent delivery of Safe & Together while also supporting the evaluation process. Delivery will end in March 2028.

Key activities during this phase include:

- **Model implementation and engagement:** Supporting delivery and embedding of the Safe & Together Model across participating local authorities, including workforce engagement with training and implementation activities, coordination of local implementation activity, and maintaining the core components of the agreed delivery approach throughout the pilot period.
- **Data collection and evaluation:** Collaborating with the evaluator to facilitate data collection, including workforce surveys, and qualitative research such as interviews or focus groups. For the waitlist arm, local authorities will work with the evaluator to support workforce engagement with baseline and endline data collection.
- **Ongoing monitoring and support:** Regular check-ins with delivery partners and the evaluator to address challenges, propose mitigations to risks, ensure compliance with ethical and safeguarding requirements and refine delivery where needed.
- **Stakeholder communication and engagement:** Keeping relevant teams in your local authorities and other key partners informed and engaged in the evaluation's progress.

Cordis Bright, Respect, Foundations, and MOPAC will work collaboratively with participating local authorities throughout the delivery period to support implementation, address challenges, and minimise unnecessary burden on local teams.

### ***Analysis and reporting period (7 months)***

Following completion of the trial's delivery period, Cordis Bright will undertake analysis and reporting activities. Participating local authorities may be invited to contribute to interpretation, reflection, and learning discussions during this phase, although no significant operational commitment is expected. The final report is expected to be completed in October 2028.



## How to apply

As funders, Foundations and MOPAC value the commitment required from Local Authorities to participate in a rigorous evaluation. Engaging in this process provides valuable insights, enhances learning, and contributes to the wider evidence base for domestic abuse related workforce programmes. We encourage applicants to consider their capacity to fully participate, ensuring they can maximise the benefits of this evaluation while successfully engaging with the Safe & Together Model and evaluation activities.

Once you have considered the scope of this opportunity, we invite you to submit an Application Form. This section will provide an overview of the application process as well as tailored guidance on how to complete the questions within the application form.

**Once you have completed your Application Form, please upload it via our [Application Portal](#) by 12PM (midday) Monday 8 June 2026.**

### Step 1: Webinar

To support you in the application process, Foundations will be hosting one webinar while the call is live. The webinar will cover the following content, details including the date and link to attend will be added to the website:

- The Safe & Together Model
- Evaluation design
- Spotlight on a borough's perspective on implementing the model (Waltham Forest)
- Application process and eligibility criteria
- Q&A – ask our panel of partners any questions.

The webinar **will be recorded** for anyone who is unable to attend.

### Step 2: Writing your application

In the Application Form itself, we have included **tailored guidance** on how to answer the questions.

If you have any further questions or require support with your application, please do not hesitate to contact us at: [evaluation@foundations.org.uk](mailto:evaluation@foundations.org.uk).

### Step 3: Shortlisting and decision

Foundations and MOPAC will carefully review all applications and shortlist those that are eligible. This section outlines how and when shortlisting and decision-making will take place.

If your application is **shortlisted**, we will notify you the week of 15 June.

**Please note:** In the event we have more than seven eligible applicants, we may need to gather more information from you during the shortlisting stage.

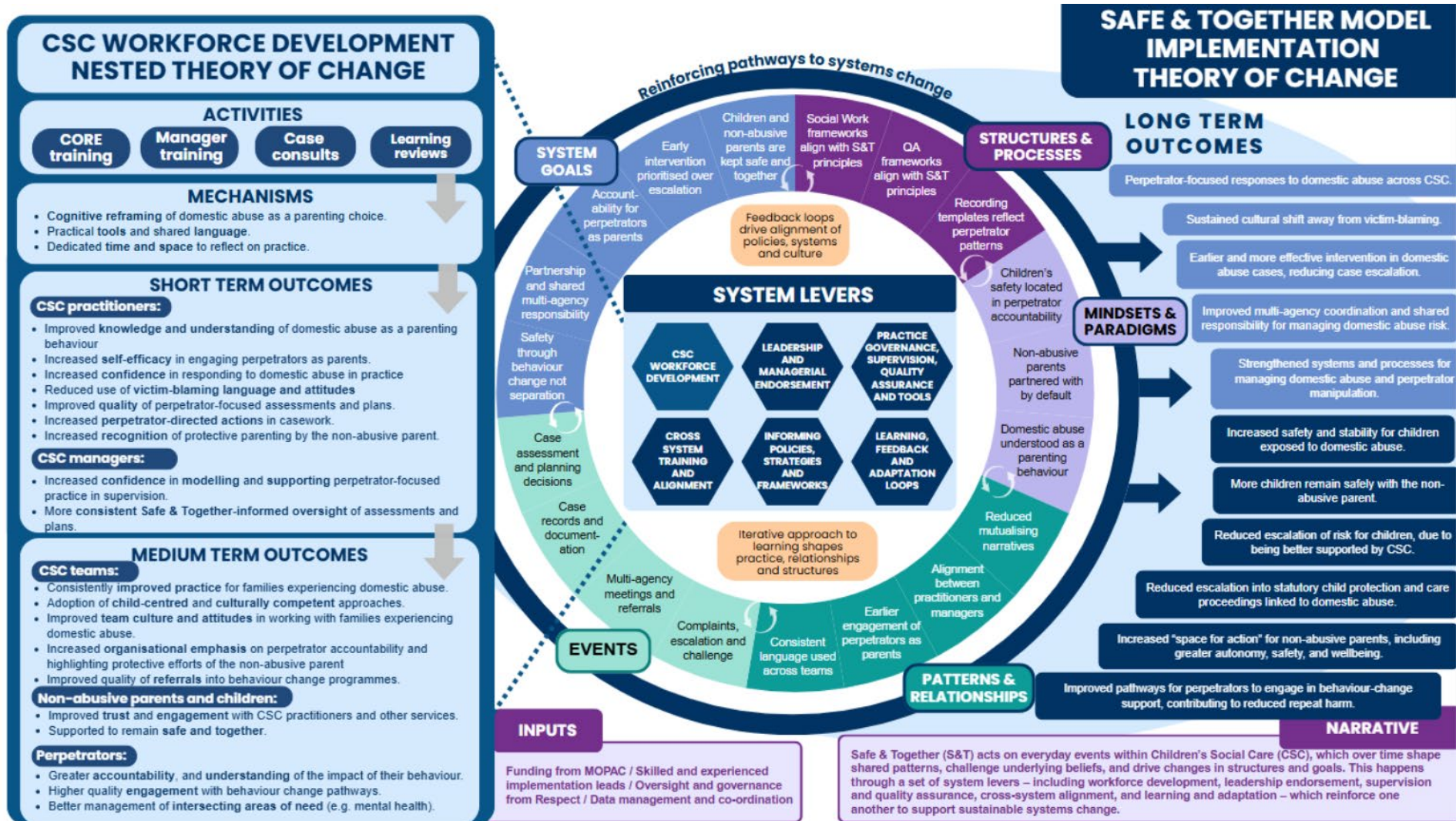


We will ask the seven shortlisted applicants to **confirm their place**. We will then confirm to all local authorities which seven local authorities will be taking part in the Safe & Together pilot impact evaluation.

We will then be in touch with each local authority to discuss onboarding for delivery and evaluation activities. Please see [Key activities by phase](#) for more information.

# Appendices

## Appendix 1: Safe & Together theory of change





## Appendix 2: Safe & Together Model outcomes

**Short-term outcomes** are expected to arise primarily through the CSC workforce development component of the model, including CORE training, manager training, case consultations and learning reviews.

### CSC practitioners

- Improved knowledge, attitudes and confidence in understanding domestic abuse as a parenting behaviour.
- Increased self-efficacy in engaging perpetrators as parents.
- Reduced use of victim-blaming language and attitudes in case analysis.
- Improved recognition of protective parenting by the non-abusive parent.
- Improved quality of perpetrator-focused assessments and case planning.
- Increased perpetrator-directed actions in casework.
- Increased confidence applying Safe & Together analytical tools in practice.

### CSC managers

- Increased confidence modelling and supporting perpetrator-focused practice in supervision.
- Greater consistency in Safe & Together-informed oversight of assessments and plans.
- Increased organisational emphasis on perpetrator accountability within supervision and case discussions.

Medium-term outcomes reflect the reinforcement of Safe & Together principles within teams, organisational processes and cross-agency interactions.

### CSC teams

- More consistent perpetrator-focused responses to domestic abuse across teams.
- Increased organisational expectations that practitioners engage perpetrators as part of safeguarding practice.
- Greater alignment between practitioners and managers in approaches to domestic abuse cases.
- Improved documentation of perpetrator behaviour patterns and their impact on children in case records.
- Improved quality of referrals into behaviour change programmes for perpetrators.
- Greater use of shared language and analytical frameworks relating to domestic abuse across teams.
- Increased emphasis on recognising and supporting protective parenting by the non-abusive parent.

### Non-abusive parents and children

- Improved trust and engagement with CSC practitioners and other services.
- Supported to remain safe and together.



## Perpetrators

- Greater accountability, and understanding of the impact of their behaviour.
- Improved quality of engagement with behaviour change pathways.
- Better management of intersecting areas of need (e.g. mental health).

**Long-term outcomes** arise from the combined influence of workforce development, organisational reinforcement and wider system alignment.

- Sustained perpetrator-focused responses to domestic abuse across Children's Social Care.
- Sustained cultural shift away from victim-blaming narratives within safeguarding systems.
- Earlier and more effective intervention in domestic abuse cases, reducing escalation of harm.
- Improved multi-agency coordination and shared responsibility for managing domestic abuse risk.
- Strengthened systems and organisational processes for managing domestic abuse and perpetrator manipulation.
- Increased safety and stability for children exposed to domestic abuse.
- More children able to remain safely with the non-abusive parent where appropriate.
- Reduced escalation of domestic abuse cases into statutory child protection and care proceedings.
- Increased "space for action" for non-abusive parents, including greater autonomy, safety and wellbeing.
- Improved pathways for perpetrators to engage in behaviour change support, contributing to reduced repeat harm.

## Appendix 3: Data protection

At Foundations, we take data protection very seriously. We want to make sure that data is used in a way that protects the individuals whose data is being processed and is in compliance with the UK General Data Protection Regulation (GDPR), the 2018 Data Protection Act and any other relevant data protection legislation and best practice guidelines.

To ensure that you are collecting, storing, processing, and sharing data securely and in a compliant manner, you will need to make sure that you have a robust data management and processing system in place. It is important to consider who will be responsible for overseeing the data management system and who will provide data protection support during the evaluation period.

It is also important to consider where the data will be stored and who will have access to it. For those involved in collecting and accessing the data, please make sure they liaise with the evaluators to ensure that the data is shared appropriately and safely. Where possible, there is an expectation for you to de-identify the information you are sharing with the evaluators, and they are expected to explain how this should be done.

During the set-up phase, delivery partners and evaluators will need to work with Foundations to consider data protection measures, define who will do the work and implement those measures into any work plans. The delivery partner needs a data protection lead. This is the key person who



is familiar with the intervention and understands the data requirements and provide data protection oversight at all stages of the evaluation. Grantees will be expected to fully comply with the UK GDPR and Data Protection Act (2018). While formal details will be contained in the Grant Agreement that is issued for each project, we outline some of our expectations below:

- The purpose of the **Data Sharing Agreement (DSA)** is to make clear that all parties (Foundations, evaluators, delivery partners and delivery sites) understand the roles and responsibilities around the use and sharing of data, including personal data, within the scope of the project. The DSA will also define data protection legislative compliance responsibilities in accordance with the Information Commissioner's Office Data Sharing Code of Conduct. Your Programme Manager will advise on whether it will be beneficial to schedule a meeting between partners and Foundations' Data Protection Officer, Aurelie Stulz, [Aurelie.Stutz@foundations.org.uk](mailto:Aurelie.Stutz@foundations.org.uk) to iron out the details needed to complete the DSA.
- The purpose of a **Data Protection Impact Assessment (DPIA)** is to review the risks to data subjects/project participants and other data subjects due to the processing of their data. It must set out why and how personal data shall be collected and stored; the justification for the types of data we will collect; and the risks and mitigations in place for those risks. Foundations will develop a DPIA for this programme; partners are welcome to collaborate with Foundations on the development of one joint-party DPIA, or to develop their own.
- The purpose of a **Data Privacy Notice (DPN)** is to remain transparent with participants about how their personal data is used. The GDPR outlines specific criteria that must be provided to all data subjects which, in this case, will include information explaining the purpose of research, how their data will be used as part of the evaluation, the rights they have including the right for participants to opt-out, legal bases for processing their data, and the intention to archive their data. We expect all data subjects, whose data is being processed, to receive a Data Privacy Notice (DPN) at the point of collection of their data.

Within the scope of this programme, we expect evaluators and delivery partners to be joint controllers with Foundations, in that partners will jointly determine and/or facilitate the methodology of capture and transfer of personal data for the purposes of the evaluation. The delivery partner will be a joint controller for the research, yet an independent controller in the delivery of the programme. This will need to be made clear in the Data Sharing Agreement we will share with you.

All awarded projects will need to include data protection practices as an embedded aspect of processing personal data. This will include such things as:

- a) Having a plan for personal data protection from the very beginning of the project's inception
- b) Providing a Data Privacy Notice to each participant inclusive of the information required of [Article 13](#) and/or 14 of the GDPR
- c) Knowing you will need to get consent from a parent or legal guardian if you are processing any children's personal data (age 13 and under – also note that an ethics process will view children as aged 16 and under)



- d) Keeping a record of any high-risk processing activities in accordance with [Article 30.5](#) of the GDPR
- e) Consider the geographic location of the data you are collecting and implement appropriate safeguards according to [Chapter 5](#) of the GDPR if data will be leaving the UK/EEA
- f) Conduct a [Data Protection Impact Assessment](#) (DPIA) on any high-risk data processing activities e.g. using children's personal data is considered high risk processing.
- g) Make sure the data is kept secure and only accessible to those involved in the study who need to access it ([Article 32](#) and [Article 89.1](#) are important to be aware of). Minimise, pseudonymise or anonymise personal data where you can
- h) Making sure any data you collect is only used for the reason it was collected.
- i) Define a retention period and a methodology for deleting the data at the end of the retention period
- j) Understanding the lawful basis for processing personal data and that consent for ethical purposes is not the same as consent for data protection purposes. It is most likely the processing of personal data in accordance with [Article 6](#) of the GDPR, will be either based on legitimate interest for societal benefit or for a performance of a task carried out in the public interest (it will be worth taking legal advice on this point)
- k) Understanding the lawful basis for processing special category personal data in accordance with [Article 9](#) of the GDPR (it is recommended that you read and understand GDPR Article 9.2(j) and DPA18 [Schedule 1 Part 1.4\(a\),\(b\)&\(c\)](#)).